

Approved 08/19/2021



Health and Safety Procedures

2021-2022 School Year
Updated August 2021

The goal of the board of trustees is to have full, in-person learning during the 2021-2022 school year with as little disruption to the learning environment as possible.

However, the board is mindful of its obligation to take necessary and appropriate actions, consistent with applicable federal and Idaho law, to address the continuing impacts of the 2019 Novel Coronavirus (“COVID-19”) on school district operations. Consistent with existing board policies relating to communicable diseases (Policies 555 and 562) and evolving guidance from federal, state and local authorities as to recommended measures to combat the spread of COVID-19, protect the health of students, staff and visitors, and maintain a full in-person learning environment, the board finds it necessary to adopt procedures and protocols addressing COVID-19.

As we welcome back all students to attend in person 5 days per week, the District health and safety procedures have been reviewed and updated. We continue to employ the mitigation strategies identified upon opening our schools previously with the updates as outlined in the following slides.

Blaine County School District continues to update procedures in order to align with the changing research, federal and state guidelines and the health needs within our local community.



Access to Buildings

Parents, volunteers, community partners and vendors will be able to visit district buildings

- Face coverings will be required, regardless of the district masking status

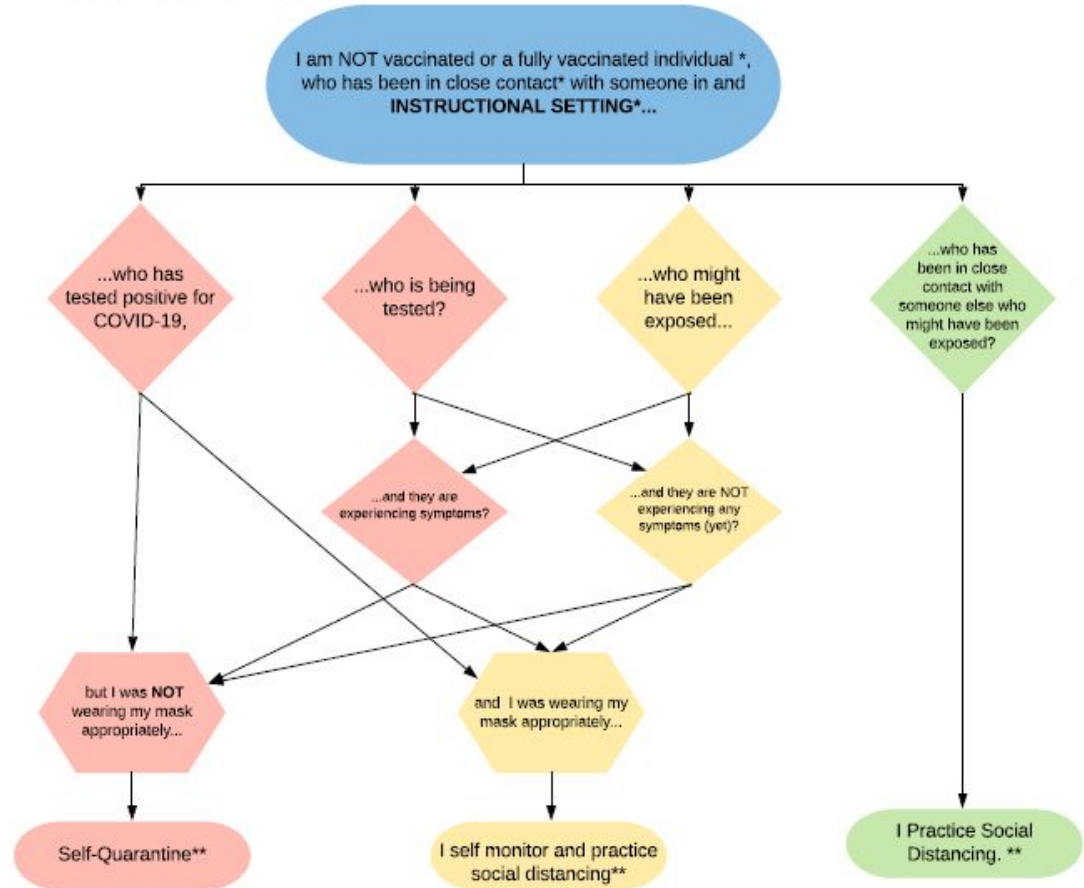
What should I do if...

Updated 08/05/2021

Contact Tracing

[Click HERE for the full document.](#)

[Guidelines for Quarantine](#)



Face Coverings

Face covering requirements will vary based on Blaine County community levels of COVID-19 transmission as defined by [CDC COVID Data Tracker](#).

Blue: Face coverings will be optional

Yellow, Orange, Red: All staff and students shall wear a face covering that completely covers the person's nose and mouth during time spent indoors

Face coverings required on school buses at all times..

Face coverings exceptions are allowed under the following circumstances:

- When outside such as at recess, outdoor learning times, etc.
- Persons with medical conditions or religious exemption that prevent them from wearing a face covering, with appropriate documentation. Staff should contact Human Resources.
- Anyone who is unconscious, incapacitated, or unable to remove the face covering without assistance.
- Other exceptions based on case manager and team decision with appropriate documentation.

Staff Face Coverings

Staff will be expected to wear face coverings when indoors of a district facility.

Exceptions are allowed under the following circumstances:

- When alone with no other staff or students present.
- When working only with other staff who are fully vaccinated, appropriate physical distancing can be maintained and all individuals comfortable without face coverings.
- Persons with medical conditions or religious exemption that prevent them from wearing a face covering, with appropriate documentation. Staff should contact Human Resources.

Personal Protective Equipment (PPE)

- Plexiglass screens are placed at office locations and other desk areas where individuals frequently come in for assistance
- Clear face coverings are provided for special programs staff as appropriate
- Vinyl desk screens for secondary students available and used as necessary

Sanitation

Building-wide:

- Custodians cleaning efforts focused on disinfecting frequently touched areas daily
- Product called (PreventX), an antimicrobial, is applied every 30 days. This prevents viruses from sticking to surfaces
- Strategically placed wall sanitizing dispensers located throughout the buildings

Instructional spaces:

- Teachers facilitate disinfection of desks and classroom surfaces after each group of children (older students will be able to help with cleaning)
- Clean rags and bottles of disinfectant and gloves are provided for each classroom (please keep out of reach of children)
- Custodial staff are responsible for laundering soiled rags daily
- Hand sanitizer is available in each classroom

Buildings and Grounds

Ventilation systems:

- All HVAC equipment is serviced to ensure maximum airflows are maintained during building use
- Outside air intake and energy recovery ventilators have been serviced
- Units have been upgraded over the past 10 years with a focus on classroom air quality and comfort
- Every filter will be changed according to maintenance schedule
- Bottle filler fountains will be available to students and cleaned daily
- Drinking fountains are covered to prevent use

Student Attendance

- Student absences for COVID related quarantine, isolation, or related medical treatments will not be counted against students.
- Parents/guardians will be asked questions regarding COVID-19 if calling in an absence
 - Completed questionnaire will be shared with school nurse for appropriate follow up

Sick Students

- Students are expected to stay home if they are sick, and be picked up promptly from school if ill.
- [Return to School Criteria](#) will be used to set student return dates for COVID related illness/quarantines.
- Homebound instruction option continues to be an option for eligible students
 - Medically fragile
 - Any student out >10 days with a physician's note
- Teachers and counselors will continue to facilitate learning during student absences

Illness and Exposure-Related Tracking

- School Nurses, Human Resources and trained staff will utilize screening procedure for any staff or student who exhibits related symptoms
- School Nurses and Human Resources will use updated close contact definition to recommend isolation and quarantines
- School Nurses will follow up with Public Health as appropriate
- School Nurses will meet with local health care providers to facilitate procedures and consistent care

Health Office Equipment

- Each school equipped with supplies for a separate isolation room and health room
 - Masks & Face Shields
 - Gowns
 - Gloves
 - Protective eye glasses
 - Bio-waste bins for contaminated/used equipment
 - Digital thermometers

Transportation

- Bus Drivers are required to wear masks
- Bus Drivers disinfect buses in between routes
- All students required to wear masks at all times while on buses
 - If a student boards the bus without a mask, one will be provided
- Social distancing is encouraged at bus stops and on buses as much as possible

Food Services

- Meals will be served through traditional methods with appropriate safety precautions.
- Schools can use the cafeteria with safety precautions.

Staff Illness

- Staff are expected to stay home if ill, or go home promptly if they become ill
- If a staff member is caring for a family member who is ill:
 - they are expected to remain at home; and,
 - follow the guidance of their healthcare provider or South Central Public Health
- Return to work criteria will be used to set staff return dates for COVID related illness/quarantines. Staff should contact the HR Department.

Monitoring Local Conditions

BCSD will monitor local conditions through the Idaho Division of Public Health, in conjunction with CDC guidance. This data source is updated daily.

<https://public.tableau.com/app/profile/idaho.division.of.public.health/viz/DPHIdahoCOVID-19Dashboard/Home>

[CDC COVID Data Tracker](#)